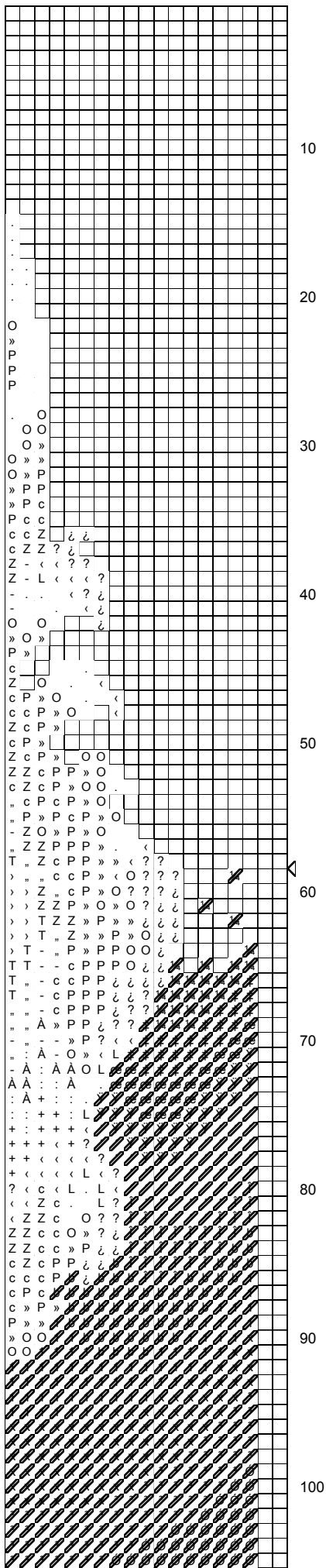




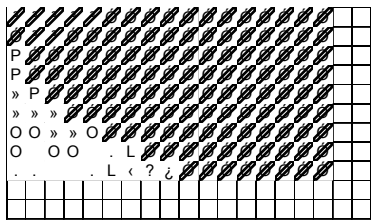
Z ? < L < L L c c Z Z P Z - - - - L - L . . O O O O ? ? < L L L . L < ? ? ? ? O O . . - - Z - Z c » » » » . P c c P
 Z Z ? ? < L < L L L c c » Z Z - - - - - L . . O O O O ? ? < L < L . L < ? ? ? ? O . . - - Z Z Z Z P » » » L . P c Z c P
 Z Z Z ? ? < L < L L c c » Z - - - - - L . . O O O O ? ? < L < L < ? ? ? ? O O . L . - - Z Z c Z c P » » < L . P P Z Z c P
 c c c c ? ? < L L c » Z - Z - - - - L L . . O O ? ? < L < ? ? ? ? O O . L < . - Z Z c c c P » » < L . P P < - Z c P
 c c c c c ? ? < L L » » Z Z Z - - - - L . . O ? ? < L < ? ? ? ? O . L < . L Z Z c P P P » » < L . L < < - Z c P
 P c c P c c c c ? ? < L L O Z Z Z - Z - - - < L . . . ? ? < L < ? ? ? ? O O L L < L Z Z c P » » ? ? < L L < Z - Z c c P
 L P c c P P c c ? ? < L . . Z Z - - - - < L . L . . ? ? < L < ? ? ? ? O . < ? ? Z c c c P » » ? ? < L L < Z - Z P » c »
 L L P P c c c P P P ? ? < L . . . Z - - - - < L < L . . ? ? ? ? c c P c P » ? ? < c c Z Z Z Z Z c c » O
 L L L L P P L L L P P ? ? < L L . L L L Z Z - Z - - - < L . . ? ? ? ? c c c P » P » ? ? < c c Z Z Z Z c . O

110

80 90 100 110 120 130 140 150



160



110

160

Portrait of a Wolf

Author:	Jeanette Crews Designs
Grid Size:	169W x 116H
Cloth Count:	14
Fabric:	14 ct Black Aida from Zweigart
Design Area:	12,07" W x 8,29" H (165 x 112 stitches)

Legend: DMC

= 310	- black	> 3799	- pewter grey - vy dk
„ 317	- pewter grey	! 000/032BF	- white/metallic pearl
À 318	- steel grey - lt	À 310/005HL	- black/hi lustre
T 413	- pewter grey - dk	A 420/032Bf	- hazelnut br./metallic
- 414	- steel grey - dk	.. 677/032BF	- old gold/metallic pl.
: 415	- pearl grey	# 746/032BF	- off-white/metallic pl.
» 433	- brown - md	[3045/032BF	- yellow beige/metallic p
O 434	- brown - lt	Ī 3046/032BF	- yellow biege md./metal.
435	- brown - vy lt	1 311	- navy blue - md
. 436	- tan	b 312	- navy blue - lt
L 437	- tan - lt	î 322	- baby blue - dk
ç 712	- cream	˘ 334	- baby blue - md
< 738	- tan - vy lt	x 336	- navy blue
? 739	- tan - ul vy lt	‡ 775	- baby blue - vy lt
+ 762	- pearl grey - vy lt	³ 823	- navy blue - dk
P 801	- coffee brown - dk	Ó 939	- navy blue - vy dk
c 898	- coffee brown - vy dk	œ 3325	- baby blue - lt
Z 938	- coffee brown - ul dk	ÿ 3755	- baby blue
- 3371	- black brown	¼ 3756	- baby blue - ul vy lt

Backstitches: DMC

— 310	- black
-------	---------

Instructions:

Pattern is in "Encore, Natural Wonders" from Jeanette Crews Designs. The pattern displays a face of a wolf.

Use 1 strand of floss for the full crosses and backstitch, unless otherwise noted in the color key. The finished project is shown in a custom frame.

Backstitch

310 / 403 - Use 1 strand of Black for everything in the pattern.